



**LAIRG COMMUNITY COUNCIL**



**2025-2030**

# **LAIRG LOCAL PLACE PLAN**

V2: July, 2026

# Contents:

**Page 1: Introduction**

**Page 2: Map.01 Place Plan Area Boundary**

**Page 3: Lairg Village**

**Page 4: 2022 Census Data**

**Page 5: 2022 Lairg Community Action Plan**

**Page 6: 2025 Community Consultation**

**Page 7: Community Consultation – Housing**

**Page 8: Housing Land Allocation**

**Page 9: Community Consultation – Activities**

**Page 10: Community Consultation – Ferrycroft**

**Page 11: Community Consultation – Businesses & Services**

**Page 12: Community Consultation – Assets & Heritage**

**Page 13: Community Consultation - Cultural Priorities**

**Page 14: Community Consultation - Environmental Priorities**

**Page 15: Community Consultation – Opportunities for Future Developments**

**Page 16: A Vision for Lairg**

**Page 17: Map.02 Buildings & Areas of Local Significance**

**Page 18: Development Proposals**

**Page 19: NPF4 & Lairg Area Place Plan**

**Page 20: NPF4 & Lairg Area Place Plan**

**Page 21: NPF4 & Lairg Area Place Plan**

**Page 22: Map.03 Ferrycroft Proposed Development**

**Page 23: Map.04 Ferrycroft Proposed Development**

**Page 24: Map.05 Ord Place Play Park Development**

**Page 25: Map.06 Lairg Core Paths/Proposed Paths**

**Page 26: Land for Business and Enterprise**

## Introduction

This Local Place Plan (LPP) offers a spatial profile of the main settlement of Lairg in Sutherland, focusing on community aspirations and land-use opportunities.

This plan reflects views gathered through community engagement in 2024/2025, and addresses key issues highlighted by the residents and community organisations of Lairg.

The Plan takes a place-based approach consolidating Lairg's existing assets with new proposals that respect the unique environment in which the village lies. It has been guided by development policies within the National Planning Framework 4 (2023) and reflects planning policy aims of creating sustainable, liveable, and productive places. (see Pages 19-21)

## Extent of this Place Plan

This Place Plan covers the village of Lairg as illustrated in **Map.01** and is primarily focused on the redevelopment of the Ferrycroft area, creation of new community spaces, and preservation and enhancement of existing assets, facilities, and services.

Neighbouring community councils which are adjoining have been included in the review process. These include Rogart, Scourie, Durness, Creich, Bettyhill, Strathnaver & Altnaharra.

The plan contains the community's vision and calls for action for the village. We recognise that the plan does not extend to include the wider parish of the Lairg Community Council area and we would hope that in time the plan could extend to include this area.

## Regard for Local Development Plan

The plan has regard for the current local Development Plan for the Local Place Plan area which comprises two current adopted Local Development Plans, the Highland-wide Local Development Plan (HwLDP) (2012) and the Caithness & Sutherland Local Development Plan (CaSPlan) (2018).

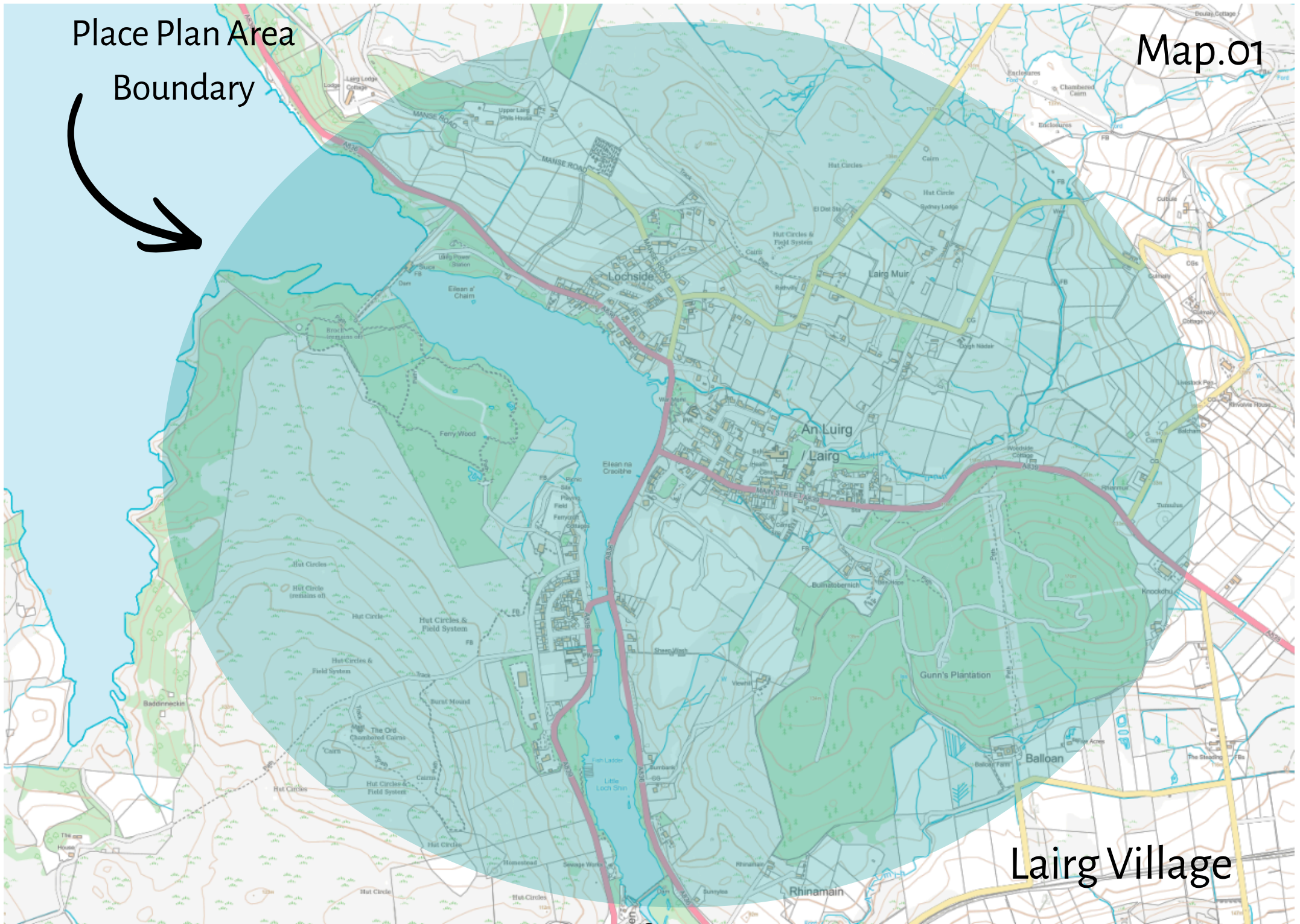
The previous locality plan, **Lairg Community Plan (2022)**, and the current consultations highlight the need for additional housing, particularly for young people and families; increased opportunities for commercial development and the creation of jobs; development of the Ferrycroft area and lochside to maximise activities potential; and preservation of the village's natural and historical assets.

<https://highlandcpp.org.uk/wp-content/uploads/2023/10/Lairg-Community-Plan.pdf>



Place Plan Area  
Boundary

Map.01



Lairg Village

**Lairg** has a population of 881 and lies at the south-eastern end of Loch Shin, a man-made loch created by the hydroelectric dam scheme.

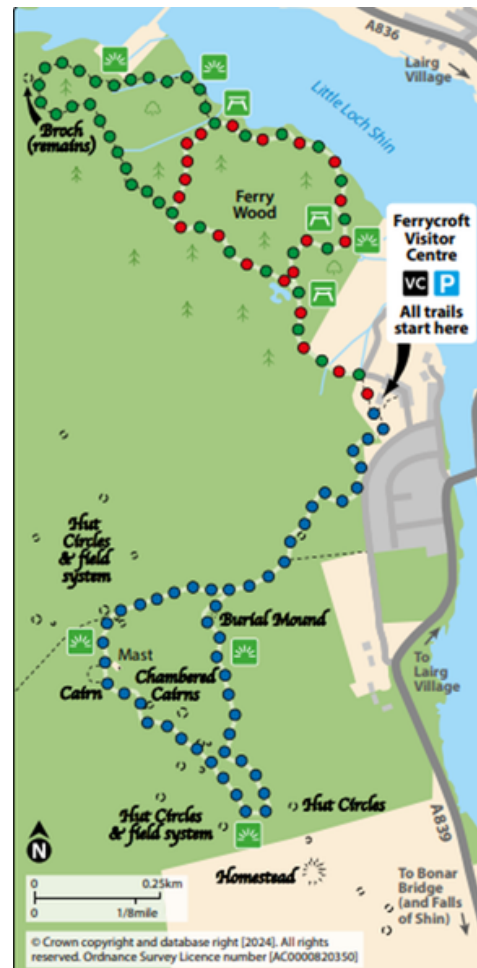
Known as the 'crossroads of the north' due to its central location within the county of Sutherland, Lairg is at the centre of routes to the east, west and north coasts.

Lairg has a primary school and Learning Centre, Community Centre with library, shop and post-office, medical centre, pharmacy, petrol station, caravan park, and a railway station just outside the village centre. Lairg has two active churches and an impressive war memorial. There is a popular café/restaurant by the side of the loch, a hotel, Spar, Costcutter, petrol station, post office, and Highland Tweed shop. The main street has several unoccupied retail premises.

The **Ferrycroft** area of Lairg is home to a visitor centre and play park, the football field and sailing club. Several trails managed by Forestry & Land Scotland start from this area. The Ord Hill Archaeological Trail over ancient moorland takes you past 3000-year-old hut circles and chambered cairns. The Lochside and Broch Trails, through the Ferry Wood pines lead to a 2000 year old broch, the Shin Dam, and the shore of Little Loch Shin.

To the east of the village lies **Gunn's Wood**, 69ha of pine woodland, believed to have been planted by forester Mr Gunn in 1846.

In the centre of Lairg is **Church Hill Woodland**, a small, community-owned woodland available for use by locals and tourists as a place to walk, relax in nature, picnic, or meet up with friends. The area features a wooden shelter, carvings, picnic benches and bike repair station.



# 2022 Census Data for Lairg | Population

The average population of Lairg Community Council area over the last 21 years is **863**.

2001 | 817  
2011 | 891  
2022 | 881

The population of **under 16's** is the smallest population and has seen a very slight fall in 2022

The population of those aged **16 years to 64** years and most likely able to work is the largest population but has seen the biggest fall in 2022, losing 9.5% of its population.

The **over 64 years** has seen the steadiest growth in population, growing 20% between 2001 and 2011 and 16% in the last 11 years.

A total increase of approximately **33% in 21 years**.

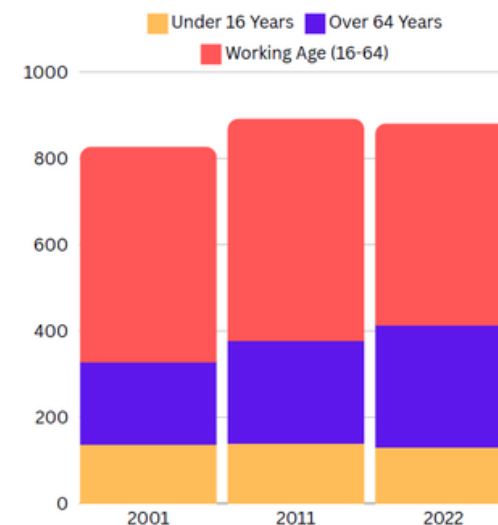
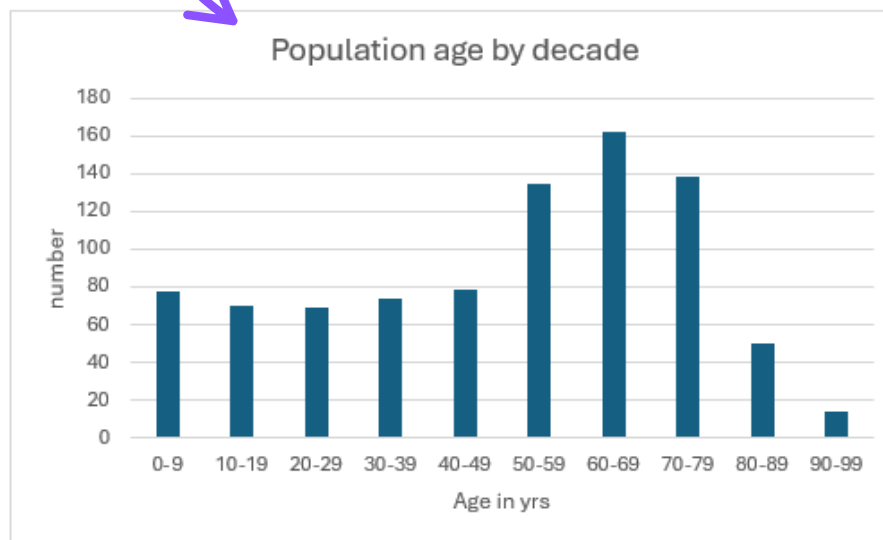
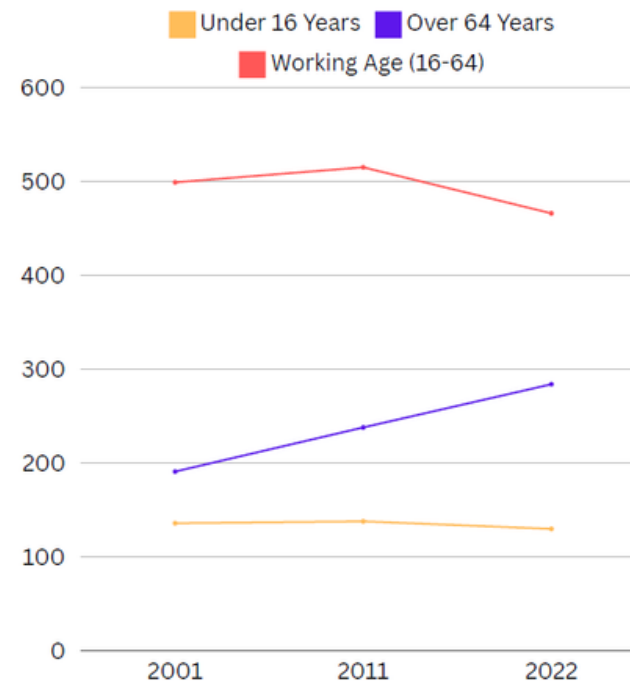
**Decline in working age people**



**Ageing Population**



**Slight decrease under 16s**



# Lairg Community Action Plan | 2022

In 2022 The Kyle of Sutherland Development Trust was commissioned to carry out engagement activities, including surveys and workshops, to inform the creation of a Community Plan for Lairg.

<https://highlandcpp.org.uk/wp-content/uploads/2023/10/Lairg-Community-Plan.pdf>

## Issues identified:

### • Transport

Lack of public transport options

Distance of the railway station from the village with no foot or cycle path connecting the two

### • Work & Local Economy

Majority of job opportunities are seasonal and non-progressive

No major employer remaining in Lairg

Suggestion that reducing business rent rates could encourage enterprise

### • Housing

Lack of affordable homes for young people

### • Local Services

Residents must travel to access most services

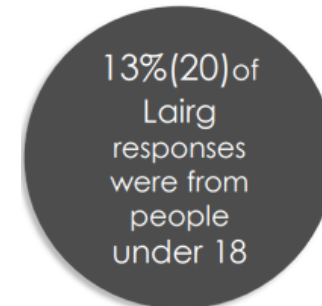
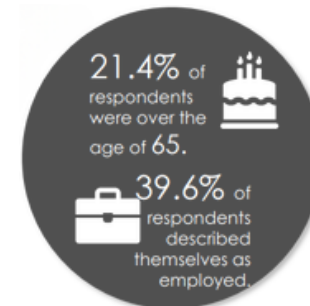
Closure of bank and post office, services declining

### • Community Care

No care home in Lairg

Lack of carers

Issues with hospital transport and getting to hospital appointments



## Suggestions for Improvements/Developments

- Encourage business start-ups
- Provide affordable business space
- Community buy-out of empty/derelict buildings



- Care home and affordable housing
- Dial-a-bus service
- Community Transport Scheme



- Wellbeing/Drop-in Centre
- Youth Club
- Spaces and Facilities for young people to socialise
- Watersports Centre at Little Loch Shin



# Lairg Community Consultation 2025

**LAIRG LOCAL PLAN  
2025-2030**

**PUBLIC  
CONSULTATION**

- HOUSING
- BUSINESS
- LEISURE
- TOURISM
- JOBS
- TRANSPORT

**LAIRG COMMUNITY  
CENTRE**  
**5th March 2025**  
KINNONVIE SUITE  
**2-6pm**

**HAVE YOUR SAY**



**LAIRG LOCAL PLAN**

**Have Your Say**

**IF YOU WANT A SAY IN THE  
FUTURE OF LAIRG, PLEASE  
TAKE A MOMENT TO  
COMPLETE OUR SURVEY**

- HOUSING
- LEISURE
- JOBS
- BUSINESS
- TOURISM



**LAIRG LOCAL PLAN  
2025-2030**

**ONLINE SURVEY**

- HOUSING
- BUSINESS
- LEISURE
- TOURISM
- JOBS
- TRANSPORT

**SCAN TO HAVE  
YOUR SAY**



**THANK YOU!**



Consultation with the community took place between November 2024 and April 2025 via an online survey with paper copies available.

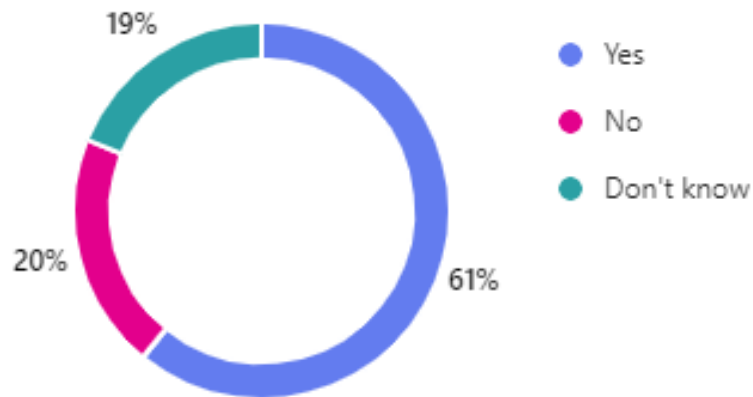
Representatives from Lairg Community Council, LDCI and Sutherland Community Partnership also attended two community markets held in Lairg Community Centre on 16<sup>th</sup> December 2024 and 17<sup>th</sup> March 2025. A public consultation was also held on 5<sup>th</sup> March 2025. At these events members of the public were invited to view proposals and give their feedback on issues such as housing, transport, activities, the local economy, tourism, and heritage.

# Lairg Community Consultation 2025 | Housing

To allow our community to be viable, sustainable, and progressive, it is pivotal to attract and retain young people and families, and to support our elderly to live independently through a mix of social and private housing development

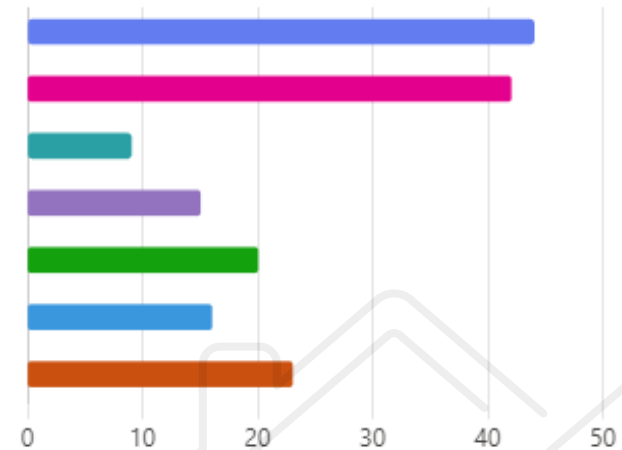
- The Community supports the development of new homes in appropriate locations
- New homes should be energy efficient, built to environmentally sustainable standards
- It was recognised there was a need for rental properties and affordable homes for local young people and families
- Existing social housing stock should be repaired and upgraded
- Consideration should be given to the ageing population and potential need for suitable residences or care homes

## Do you think more housing is needed in the area?



## What are your main concerns about housing in our community?

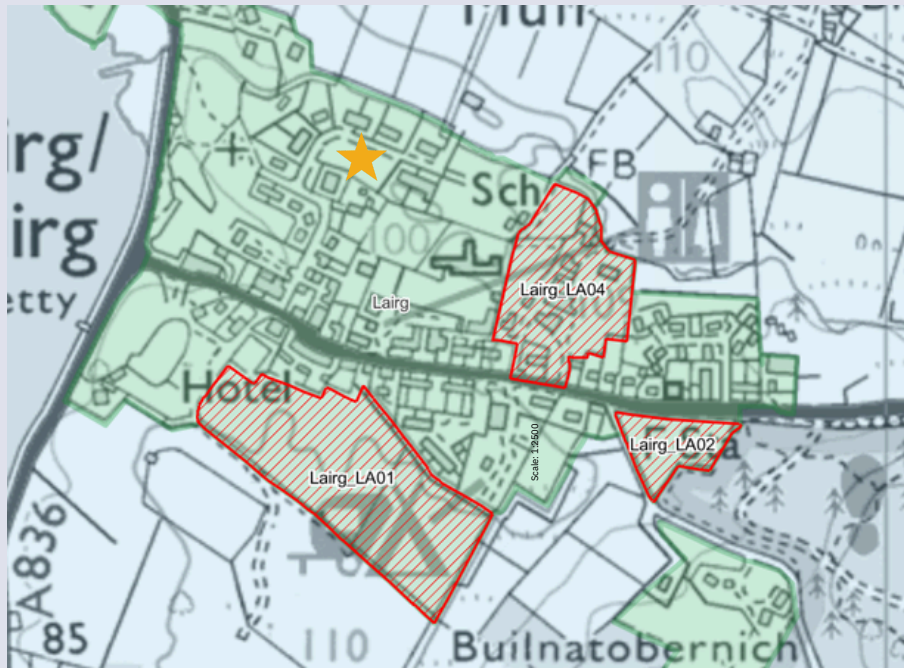
- Affordability
- Availability
- Build quality
- Property condition
- Energy efficiency
- Purchase options
- Rental opportunities



family homes unoccupied housing stock housing young local development rent beneficial young kids lack affordable housing homes in the village local people people housing needs housing stock housing portfolio area local people renting and most housing housing stock

In alignment with NPF4 Policy 29 the community supports:

- developing low-cost rental and purchaseable homes to attract and keep young people in the area
- Keeping community control over some new homes through rural housing burdens



Highland Council | Housing Land Audit 2024

In 2025, Lairg & District Community Initiatives (LDCI), in partnership with Albyn Housing built eight affordable, accessible social housing residences on the site of the former Sutherland Arms Hotel. These houses allow people with health conditions or higher levels of support needs to live independently in their own community.

It is noted that in the most recent Housing Land Audit there are no plans to build homes on any of the 3 areas of land identified for development in the adopted CaSPlan LA01 (50 homes), LA02 (9), LA04 (4) during the period 2024-2039



**Areas identified for additional housing opportunities include:**

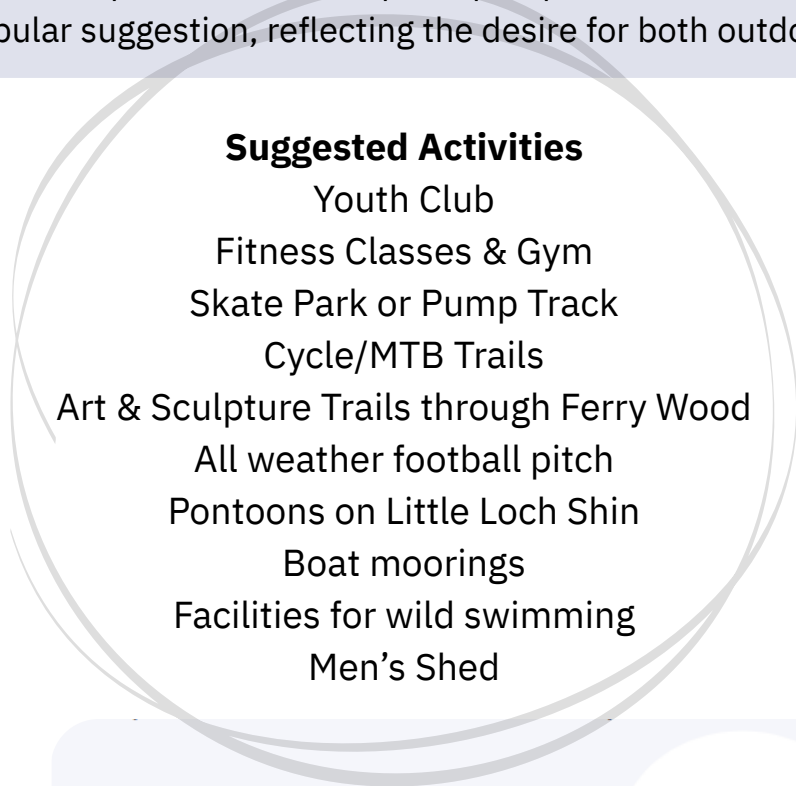
Land to the north of the former BT exchange on Milnclarin Way



# Lairg Community Consultation 2025 | Activities

- Survey responses highlight a need for more activities for residents of Lairg, particularly for the 12-16, and 16-24 year age groups
- 90% of respondents were in favour of grant-funded investment into the jetty and lochside to improve facilities there for loch users (e.g improved club house, changing area, boat house, storage and pontoon.)
- 65% of respondents were in favour of a MUGA (Multi-Use Games Area)
- 39% of respondents supported the development of a Skate park/ pump track in the area.

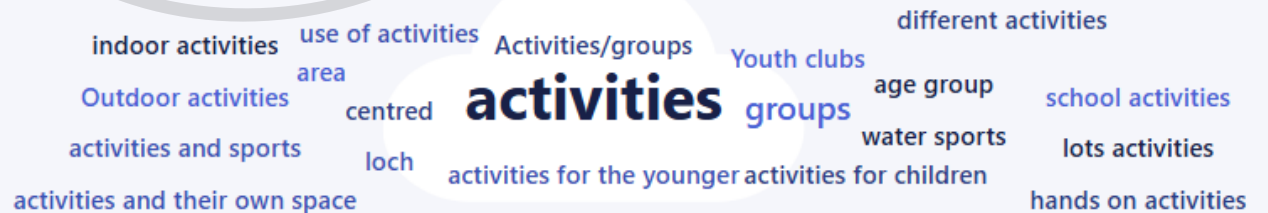
Outdoor gym equipment was also a popular suggestion, reflecting the desire for both outdoor and indoor activities in Lairg



Outdoor Gym equipment



Climbing Boulders



# Lairg Community Consultation 2025 | Ferrycroft

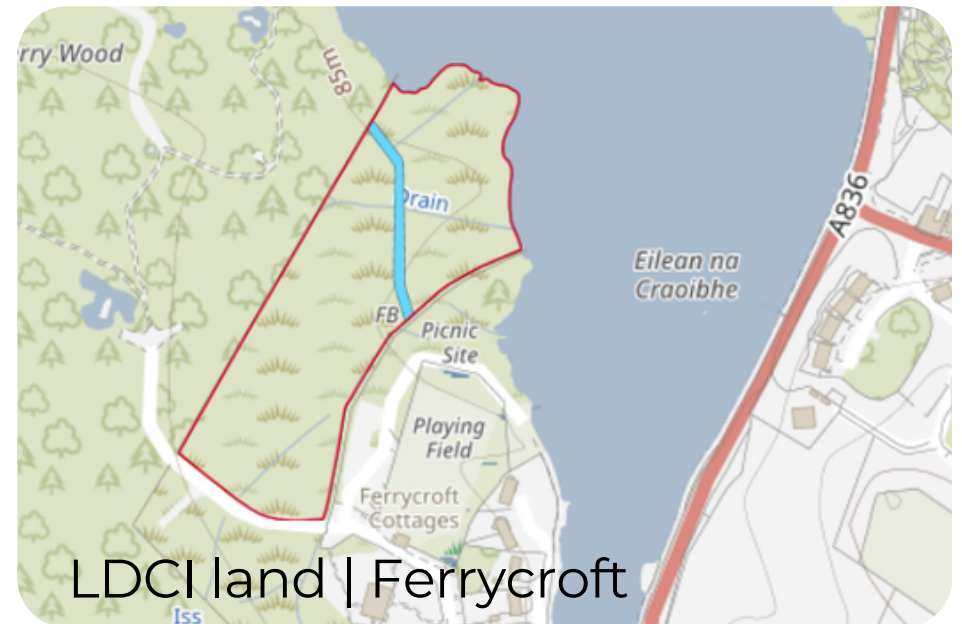
The Ferrycroft area and Little Loch Shin have been identified as the ideal location for various types of leisure activities. Local Development Trust, Lairg & District Community Initiative (LDCI), own a significant area of land near the lochside and in partnership with Lairg Community Council and relevant stakeholders would look to take forward development projects.

Developments could focus on improving the facilities for watersports with a clubhouse, changing rooms, storage, boathouse, new jetty and repairs to the wharf.

The site could also house a Multi-Use Games Area (MUGA), outdoor gym equipment, skate park or pump track

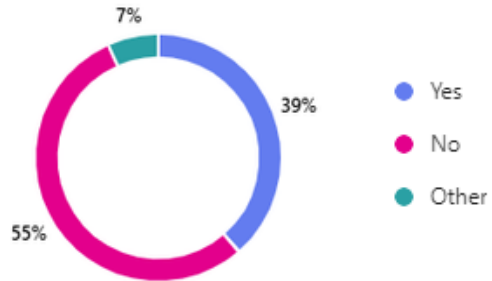
Other suggestions to enhance the area included:

- Art & Nature Trails in Ferry Wood
- Improving access to the loch and linking the lochside and Ferry Woods with an all access boardwalk
- Pontoons on the loch

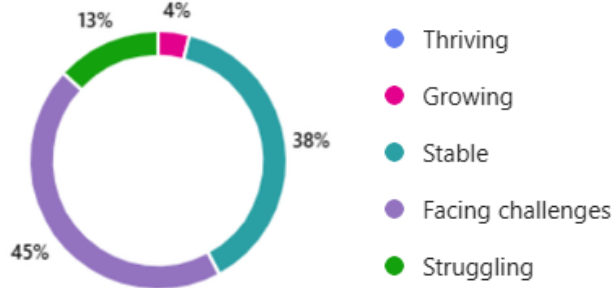


# Lairg Community Consultation 2025 | Businesses & Services

## Are you happy with the level of businesses and services in Lairg?



## How would you rate the economic wellbeing of our community?



## What do you think might encourage new businesses or create jobs in our community?



Businesses work hard to survive in this economically fragile area and are the backbone of local employment. It is important to our communities and to business survival, that they are supported to remain and develop.

There are opportunities for small businesses to thrive in Lairg - particularly in hospitality, retail and light industry. The community are keen to encourage social and private entrepreneurship.

Retail and light industrial sites include Main Street, Laundry Road, and Church Hill Road

Opportunities to develop the tourism industry in Lairg should be explored.

Digital connectivity and fast broadband are vital for remote working and local businesses. It is essential that digital connection is improved across the community.

Lairg has a number of community assets and facilities which contribute to the successful cohesion, resilience, health and social inclusion of our community, helping to achieve NPF4's Policy 15 highlighting the importance of local living.

The community is in favour of retaining and supporting:

- Lairg Medical Centre
- Local Shops, Post Office and Garages
- Places of worship
- Community & Learning Centres
- Ferrycroft Visitor's Centre
- The Pier Cafe
- Local community organisations

# Lairg Community Consultation 2025 | Assets & Heritage

## Heritage & Historical sites to protect

The buildings and natural areas in Lairg that respondents are proud of and want to protect are:



- The woodlands (Church Hill, Ferry Wood & Gunns Wood)
- The Ferrycroft Visitor Centre
- The Ferrycroft playpark
- The War Memorial
- Lairg Primary School
- Ord Hill burial ground, Broch & Cairns
- The Community Centre
- Lairg Learning Centre
- Little Loch Shin
- Churches
- The football pitch
- The Broons Hoose



When asked for thoughts regarding the history, historical features, or importance of the area they wished to share, respondents mentioned:

- The Broch at Ferrycroft
- The archaeological remains on Ord Hill, and improvement and signposting of the path
- A permanent space/ local history museum for Lairg History Society to display photos & memorabilia
- The Lairg Asteroid
- The Neolithic tomb and stone circles
- The modern history of the dam
- The old underground observer core on the Crofters Show Ground
- Signage to promote these historical sites
- Recognition of Sir Edgar Horne

football pitch Church Woods old centre and woods Sutherland Arms  
Lairg school loch ferrycroft war memorial  
village Ord areas building woods community centre Ferrycroft and woods  
play parks new Ferrycroft centre

# Lairg Area Plan | Cultural Priorities

The cultural vibrancy of a community where traditions are honoured and creativity flourishes is important for our sense of place, identity, and heritage. It is important that cultural events are supported.

The majority of cultural events take place in community buildings therefore there is a direct link between maintaining and protecting those buildings, and being culturally vibrant. We note the importance of these assets and the need to ensure they are retained and maintained.

The community would like to:

- Retain, maintain, and develop cultural dances such as Ceilidhs
- Retain, maintain, and develop cultural music such as concerts
- Retain, maintain, and develop cultural gatherings such as Lairg Crofters Show and Lairg Gala Week
- Retain, maintain, and develop cultural events such as seasonal Celebrations, and Lairg Winterfest



## Lairg Learning Centre & Lairg Community Centre

The community recognises the value of Lairg Learning Centre and the Community Centre as places for people to gather, meet, learn, exercise, and celebrate.

## Local History

Lairg is rich in local history and opportunities to celebrate and capitalise on this through accessible interpretation and exhibitions should be explored, and Lairg History Society supported.



# Lairg Area Plan | Environmental Priorities

The natural environment is one of our greatest assets, valued by the community and with an important part to play in local employment opportunities. The natural environment must be protected, and all developments should be considered in the context of the landscape, wildlife, and the people who live here, and those who rely on it for their livelihoods.

Our **rivers and lochs** support the environment, the economy, and the community and should be protected. Open water offers the opportunity for outdoor activities and investigations into how better to access the lochs and river are needed.

As with many areas of the Highlands, **woods and forests** are an important part of the community, contributing to our economy, infrastructure, and way of life. Protection of wildlife habitats and access to outdoor spaces for people should be maintained. Lairg has several woods which must be maintained and sympathetically further developed for the benefit of the environment, community, and economy through supported community involvement and support from Forestry and Land Scotland, and the Woodlands Trust.

- Retain, maintain, and develop **Ferry Wood**
- Retain, maintain, and develop **Gunns Wood** with exploration of developing further trails for MTBs
- Retain, maintain, and develop **Church Hill Woods**

## Community Green Spaces

Alongside our natural environment are community green spaces including play parks, playing fields, and land for community events. These should be protected and enhanced to deliver health, wellbeing, and physical benefits.

Opportunities for **community gardens** at Ord Place and Laundry Road should be explored to allow for community food production.



# Lairg Community Consultation 2025 | Opportunities for Future Developments

It is noted that there are a number of empty, unused, under-used, or derelict properties and sites in Lairg which should be brought back into either private or community use.

‘Barney’s House’, the former antique shop at Bridgend could be demolished to site a gym and youth club, increasing opportunities for employment, and year-round activities for all ages.

The green space to the north of the community polytunnel in Laundry Road could be developed into an all-access sensory garden and community growing garden. Similarly, the former play park at Ord Place could be developed into a community garden

The tennis courts on Main Street are in need of improving/developing.

Increased tourism could be encouraged by the creation of a campsite or Aire

The former Transport park area could be utilised for tourist facilities and information

Land in front of Lairg Church of Scotland

There is support for Community-Ownership of Ferrycroft Visitor’s Centre and ambition to increase opening hours, develop the site and house additional community services e.g. drop in clinics, social/networking events, community food larder.

The history and heritage of Lairg should be celebrated



vast amount of history  
 history museum  
 history of hydro  
 History Society

stopping point  
 better  
 Sir Ord Hill old  
 Broch years

village history  
**lairg**  
 lairg estate

edger  
**history**  
 areas of Lairg local sign

modern history  
 amazing history

# A vision for Lairg: a resilient village embracing the future

Our aim is to develop a thriving, resilient, supportive, and self-reliant village. A place where people of all ages can continue to live and thrive, where families can be housed, visitors are welcomed, leisure and learning opportunities abound, employment and enterprise are supported.

We want to preserve and enhance what is unique and best in Lairg.

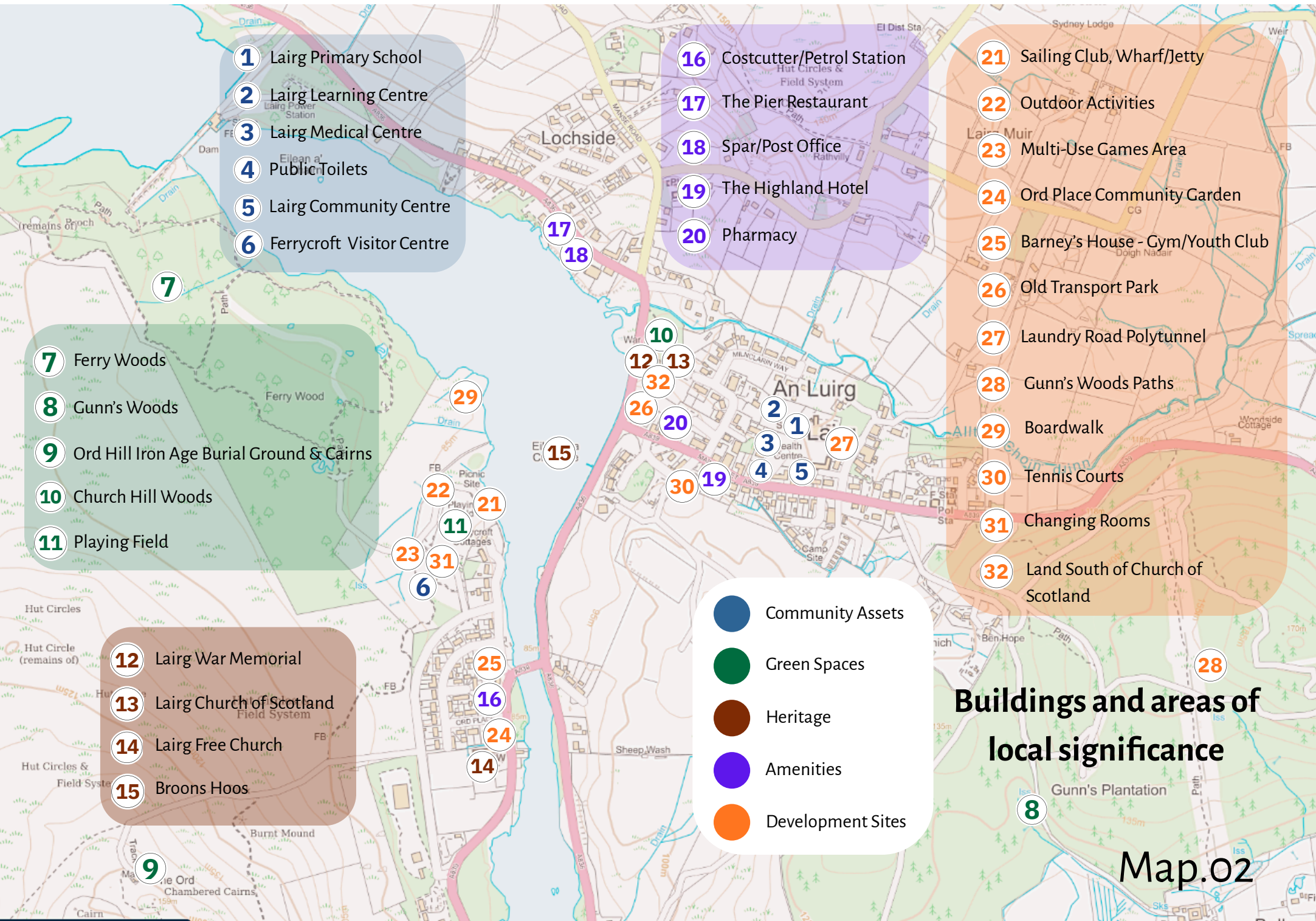
- Millenia of history and heritage
- A unique location on Loch Shin: gateway to the north, west and east coasts
- Sporting and leisure facilities and activities
- Cohesive community spirit and pride in place

We aim to develop and realise the full potential of our community by addressing inequalities and prioritising projects identified in current and previous community engagement and village plans.

This Area Place Plan has identified the following priorities for future development in Lairg

<b>Priority 1</b>	<b>Protect and enhance the environment, services and facilities within the LAPP area to maintain social and economic resilience, health &amp; wellbeing</b>
<b>Priority 2</b>	<b>Encourage the development and community ownership of vacant, derelict, and neglected buildings and land</b>
<b>Priority 3</b>	<b>Support and promote Lairg, it's biodiversity, natural assets, heritage, amenities, events and facilities as a attractive place to live, work, thrive and visit</b>
<b>Priority 4</b>	<b>Establish and promote community third spaces and nurture community resilience and cohesion</b>
<b>Priority 5</b>	<b>Explore opportunities to attract and support social and private entrepreneurship, retail and light industrial enterprise</b>

These priorities have informed all development proposals as listed on Page 18. Their relevance to NPF4 is detailed in Pages 19-21. The development proposals are a result of recent community consultation exercises, previous local development plans and Lairg's community action plan. They represent the most up-to-date reflection of local ambition for Lairg and its community.



- 1 Lairg Primary School
- 2 Lairg Learning Centre
- 3 Lairg Medical Centre
- 4 Public Toilets
- 5 Lairg Community Centre
- 6 Ferrycroft Visitor Centre

- 16 Costcutter/Petrol Station
- 17 The Pier Restaurant
- 18 Spar/Post Office
- 19 The Highland Hotel
- 20 Pharmacy

- 21 Sailing Club, Wharf/Jetty
- 22 Outdoor Activities
- 23 Multi-Use Games Area
- 24 Ord Place Community Garden
- 25 Barney's House - Gym/Youth Club
- 26 Old Transport Park
- 27 Laundry Road Polytunnel
- 28 Gunn's Woods Paths
- 29 Boardwalk
- 30 Tennis Courts
- 31 Changing Rooms
- 32 Land South of Church of Scotland

- 7 Ferry Woods
- 8 Gunn's Woods
- 9 Ord Hill Iron Age Burial Ground & Cairns
- 10 Church Hill Woods
- 11 Playing Field

- 12 Lairg War Memorial
- 13 Lairg Church of Scotland
- 14 Lairg Free Church
- 15 Broons Hoos

- Community Assets
- Green Spaces
- Heritage
- Amenities
- Development Sites

## Buildings and areas of local significance

Map.02

Development Proposals		Map.02 Ref.No.
D1	Creation of new wharf and slipway at Ferrycroft Loch Side, pontoons in the loch	21
D2	Development of new multipurpose clubhouse, workshop, and boat store at Ferrycroft	21
D3	Construct accessible boardwalk loch side connecting to existing pathways at Ferry Wood	29
D4	Build a multi-use games area (MUGA) at Ferrycroft	23
D5	Create outdoor activities area at Ferrycroft - Climbing Boulders, Rope Walk, Outdoor Gym	22
D6	Explore feasibility of creating a bathing area/beach at Ferrycroft Loch Side	29
D7	Explore feasibility of creating a woodland adventure playground in the LAPP area	Map.01
D8	Upgrade existing Ferrycroft changing rooms to include shower facilities, possible launderette	31
D9	Explore feasibility of community ownership of Ferrycroft Visitor's Centre	6
D10	Create a community garden and outdoor third space at the former Ord Place Play Park	25
D11	Expand community gardening and green space provision on land adjacent to Laundry Road Polytunnel	27
D12	Develop land south of Church of Scotland to create additional walks, outdoor third space	32
D13	Community ownership of site housing 'Barney's House' to construct a single storey indoor gym/youth club	25
D14	Expand facilities at the Transport Park to create hospitable meeting place and Tourist Information	26
D15	Work in partnership with FLS to improve and expand existing paths and trails at Gunns Wood	28
D16	Explore feasibility of creating a community sharing shed and Men's Shed in the LAPP area	Map.01

# National Planning Framework 4 & Lairg Area Place Plan

Sustainable Places				Lairg PP Priority
<b>Policy 1 - Tackling Climate &amp; Nature Crises</b>				
When considering all development proposals significant weight will be given to the global climate and nature crises	Development in Lairg will embrace eco-technologies to reduce climate impact	D1-D16	<ul style="list-style-type: none"> <li>● Just Transition</li> <li>● Conserving and recycling assets</li> <li>● Local living</li> <li>● Compact urban growth</li> <li>● Rebalanced development</li> <li>● Rural revitalisation</li> </ul>	1,3
<b>Policy 2 - Climate Mitigation &amp; Adaption</b>				
Development proposals will be sited and designed to adapt to current and future risks from climate change	Emissions from development in Lairg will be minimised, places created will be resilient to climate change impacts	D1-D16	<ul style="list-style-type: none"> <li>● Just Transition</li> <li>● Conserving and recycling assets</li> <li>● Local living</li> <li>● Compact urban growth</li> <li>● Rebalanced development</li> <li>● Rural revitalisation</li> </ul>	1,3
<b>Policy 3 - Biodiversity</b>				
Biodiversity will be protected, development will deliver positive effects and strengthen nature networks	Development in Lairg will enhance biodiversity and strengthen nature networks through connectivity and nature-based solutions	D3, 5, 6, 10,11,12 15	<ul style="list-style-type: none"> <li>● Just Transition</li> <li>● Conserving and recycling assets</li> <li>● Rebalanced development</li> <li>● Rural revitalisation</li> </ul>	1,3
<b>Policy 4 - Natural Places</b>				
Protect, restore and enhance natural assets making best use of nature-based solutions	Lairg's natural places are protected and restored. Natural assets are managed in a sustainable way that maintains and grows their essential benefits and services	D1, D6, D10-12, D15	<ul style="list-style-type: none"> <li>● Just Transition</li> <li>● Conserving and recycling assets</li> <li>● Rebalanced development</li> <li>● Rural revitalisation</li> </ul>	1,3
<b>Policy 6 - Forestry, Woodland &amp; Trees</b>				
Protect and expand forests, woodland and trees	Lairg will work with appropriate partners to ensure existing woodland and trees are protected and those on development sites are suitably managed	Gunns Wood, Ferry Wood, Church Hill Woods	<ul style="list-style-type: none"> <li>● Just Transition</li> <li>● Conserving and recycling assets</li> <li>● Rebalanced development</li> <li>● Rural revitalisation</li> </ul>	1,3

<b>Policy 7 - Historic Assets and Places</b>				
Protect and enhance historic environment assets and places, enabling positive change as a catalyst for the regeneration of places	Lairg recognises the social, environmental and economic value of the historic environment to its economy and cultural identity	Map.02 - 6, 9, 12, 13, 14, 15,	<ul style="list-style-type: none"> <li>● Just Transition</li> <li>● Conserving and recycling assets</li> <li>● Local living</li> <li>● Compact urban growth</li> <li>● Rebalanced development</li> <li>● Rural revitalisation</li> </ul>	1,3,4
<b>Policy 9 - Brownfield, vacant &amp; derelict land, empty buildings</b>				
Encourage, promote and facilitate the reuse of brownfield, vacant and derelict land and empty buildings	This Place Plan establishes opportunities for the sustainable reuse of brownfield land, vacant and derelict land and empty buildings	D1-8, D10-14	<ul style="list-style-type: none"> <li>● Just Transition</li> <li>● Conserving and recycling assets</li> <li>● Local living</li> <li>● Compact urban growth</li> <li>● Rebalanced development</li> </ul>	2,4,5
<b>Policy 13 - Sustainable Transport</b>				
Encourage, promote and facilitate developments that prioritise walking, wheeling, cycling and public transport	Proposed developments in Lairg are in locations which support sustainable travel	D1-16	<ul style="list-style-type: none"> <li>● Just Transition</li> <li>● Conserving and recycling assets</li> <li>● Local living</li> <li>● Compact urban growth</li> <li>● Rebalanced development</li> <li>● Rural revitalisation</li> </ul>	1,3,4
<b>Liveable Places</b>				<b>Lairg PP Priority</b>
<b>Policy 14 - Design, quality, and place</b>				
Encourage, promote and facilitate well-designed development that makes successful places, taking a design-led approach and applying the Place Principle	The proposed developments in Lairg will respect the unique environment in which the village lies to deliver quality places, spaces, and environments	D1-16	<ul style="list-style-type: none"> <li>● Just Transition</li> <li>● Conserving and recycling assets</li> <li>● Local living</li> <li>● Compact urban growth</li> <li>● Rebalanced development</li> <li>● Rural revitalisation</li> </ul>	1,3,4
<b>Policy 15 - Local Living</b>				
Create connected and compact neighbourhoods where people can meet the majority of their daily needs within a reasonable distance of their home	This Place Plan covers the village of Lairg and supports local living through the protection of current services and facilities and thoughtful development which supports health & wellbeing, & reduces inequalities	D1-16 Map.02 - 1-32	<ul style="list-style-type: none"> <li>● Just Transition</li> <li>● Conserving and recycling assets</li> <li>● Local living</li> <li>● Compact urban growth</li> <li>● Rebalanced development</li> <li>● Rural revitalisation</li> </ul>	1,4

### Policy 16 - Quality Homes

Encourage, promote and facilitate the delivery of high-quality affordable and sustainable homes in the right locations	This local plan identifies land for housing within the plan boundary	P9	<ul style="list-style-type: none"> <li>• Just Transition</li> <li>• Conserving and recycling assets</li> <li>• Local living</li> <li>• Compact urban growth</li> <li>• Rebalanced development</li> <li>• Rural revitalisation</li> </ul>	1
------------------------------------------------------------------------------------------------------------------------	----------------------------------------------------------------------	----	------------------------------------------------------------------------------------------------------------------------------------------------------------------------------------------------------------------------------------------	---

### Policy 21 - Play, recreation & sport

Encourage, promote, facilitate spaces and opportunities for play, recreation and sport. Natural and built environments are improved with more equitable access to opportunities for play and recreation	This place plan identifies sites for sports, play, and outdoor recreation for people of all ages and aims to improve physical and mental health through provision of and access to recreation, play and sport facilities	D1-7, D10-13, D15, D16	<ul style="list-style-type: none"> <li>• Just Transition</li> <li>• Compact urban growth</li> <li>• Local living</li> <li>• Rebalanced development</li> <li>• Rural revitalisation</li> </ul>	1,2,3,4,5
---------------------------------------------------------------------------------------------------------------------------------------------------------------------------------------------------------	--------------------------------------------------------------------------------------------------------------------------------------------------------------------------------------------------------------------------	------------------------	-----------------------------------------------------------------------------------------------------------------------------------------------------------------------------------------------	-----------

### Policy 23 - Health & safety

Protect people and places from environmental harm and encourage, promote and facilitate development that improves health & wellbeing	Lairg Place Plan aims to create healthier places through opportunities for exercise, healthier lifestyles, and land for community food growing	D1-7, D10-13, D15, D16	<ul style="list-style-type: none"> <li>• Just Transition</li> <li>• Local living</li> <li>• Compact urban growth</li> <li>• Rebalanced development</li> </ul>	1,3,4
--------------------------------------------------------------------------------------------------------------------------------------	------------------------------------------------------------------------------------------------------------------------------------------------	------------------------	---------------------------------------------------------------------------------------------------------------------------------------------------------------	-------

## Productive Places

Lairg PP

### Policy 25 - Community Wealth Building

Priority

Encourage, promote and facilitate a new strategic approach to economic development that provides a practical model for building a wellbeing economy.	Lairg Place Plan supports community ownership and management of buildings and land and favours local development that focuses on community and place benefits to support local employment and supply chains	D1-16	<ul style="list-style-type: none"> <li>• Just Transition</li> <li>• Rebalanced development</li> <li>• Rural revitalisation</li> </ul>	1,2,3,4,5
------------------------------------------------------------------------------------------------------------------------------------------------------	-------------------------------------------------------------------------------------------------------------------------------------------------------------------------------------------------------------	-------	---------------------------------------------------------------------------------------------------------------------------------------	-----------

### Policy 30 - Tourism

Encourage, promote and facilitate sustainable tourism development which benefits local people. Communities and places enjoy economic, social, and cultural benefits from tourism, supporting resilience and stimulating job creation	Lairg Place Plan identifies suitable locations reflecting opportunities for tourism development taking full account of the needs of communities, visitors, the industry and the environment.	D1-9, D12, D14, D15	<ul style="list-style-type: none"> <li>• Just Transition</li> <li>• Conserving and recycling assets</li> <li>• Local living</li> <li>• Rebalanced development</li> <li>• Rural revitalisation</li> </ul>	1,2,3,4,5
--------------------------------------------------------------------------------------------------------------------------------------------------------------------------------------------------------------------------------------	----------------------------------------------------------------------------------------------------------------------------------------------------------------------------------------------	---------------------	----------------------------------------------------------------------------------------------------------------------------------------------------------------------------------------------------------	-----------

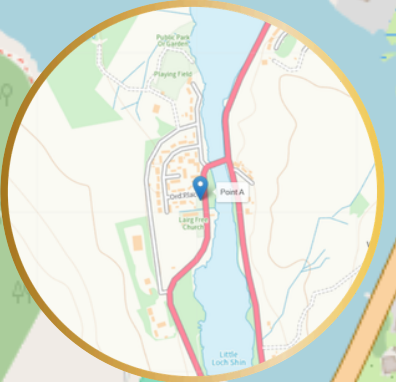
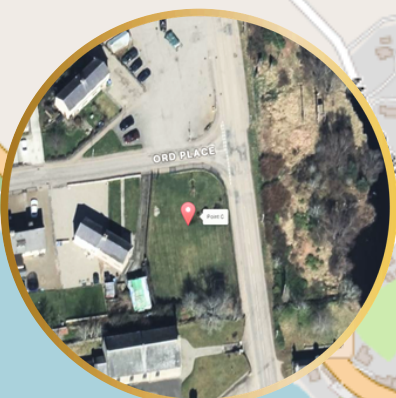
## Proposed Development

- Slipway, wharf, & pontoons
- New Clubhouse
- Changing facilities
- Boat Store
- Lochside boardwalk
- Outdoor Gym/Climbing Boulders
- MUGA



Map.03



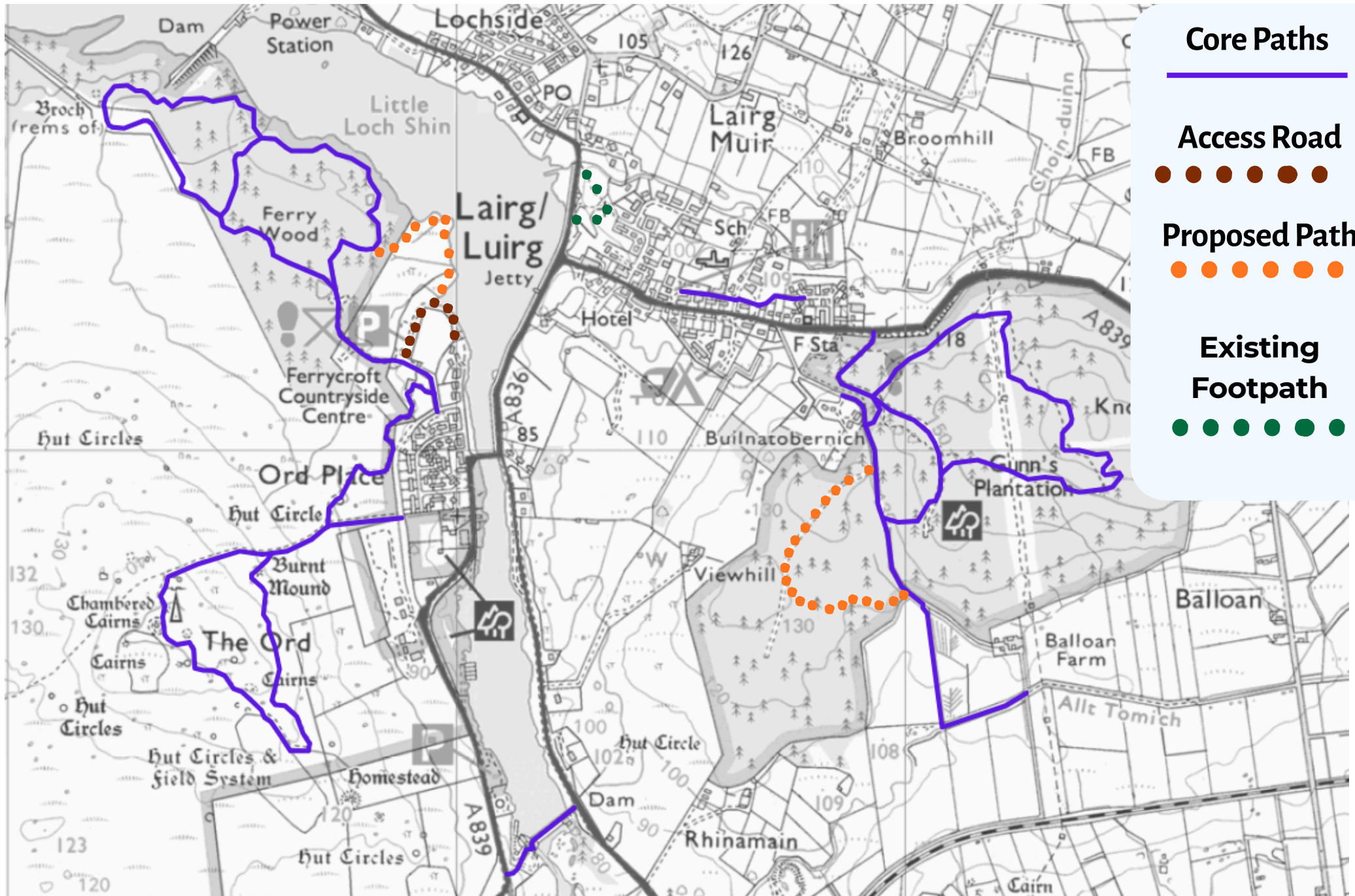


## Proposed Development

**Ord Place  
Former Play Park to  
Community Garden**

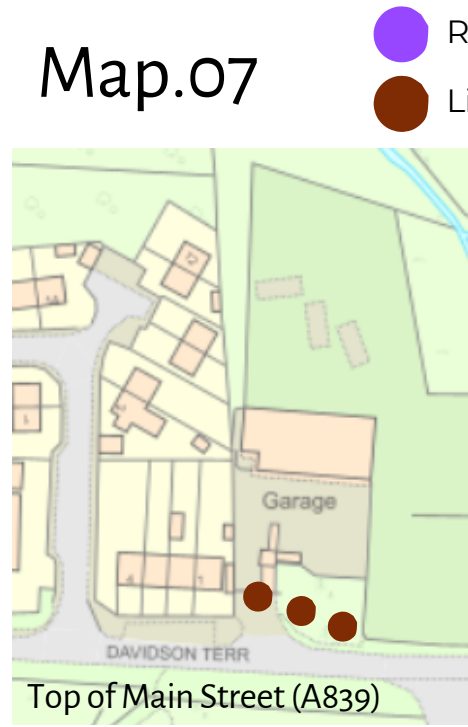
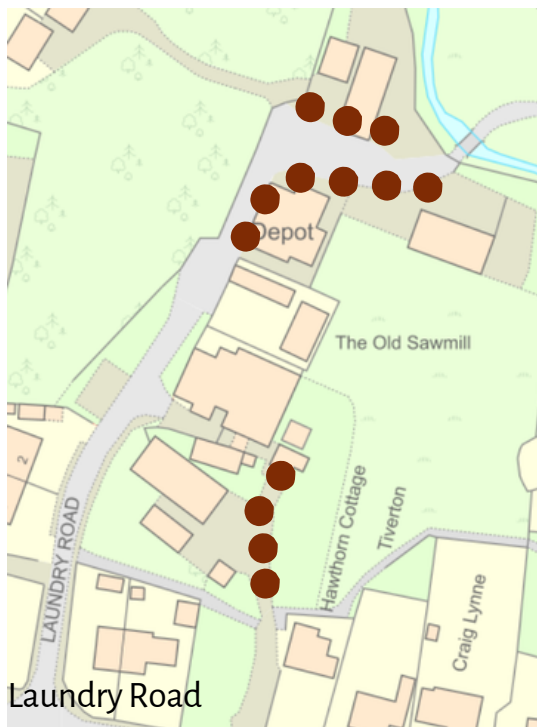


Map.05



Map.06

# Land for Business and Enterprise



## Map.07

- Retail Areas
- Light Industrial