

OLD TOILET : PLANNING PROPOSALS

broadford old toilets

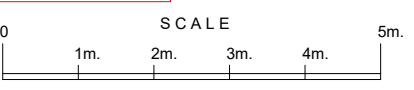
PARKING :
existing public car park to the north of the A87 maintained to serve building

pavement

external space for seating

UNIT 1 : 22.7sq.mm

UNIT 2 : 13sq.mm

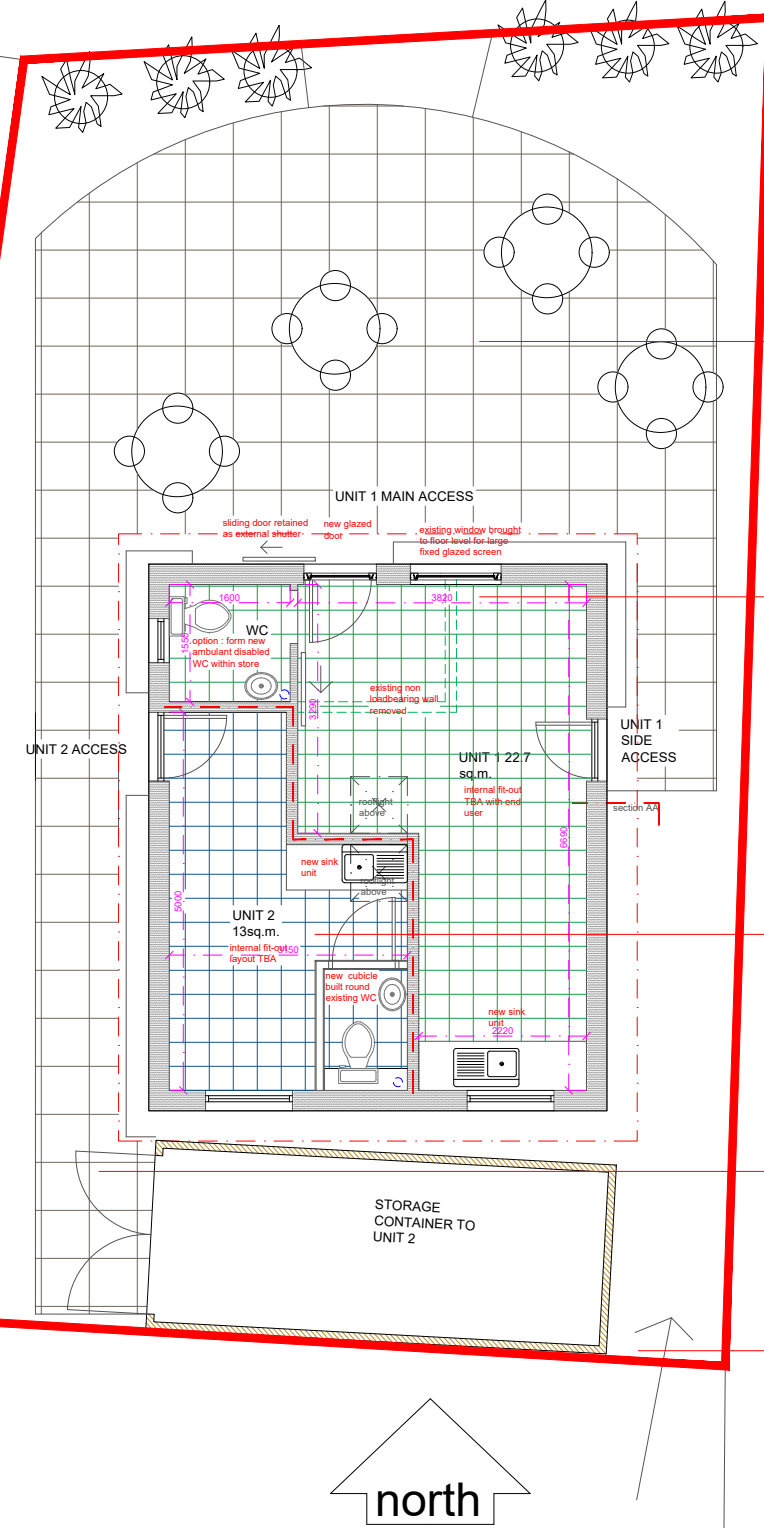
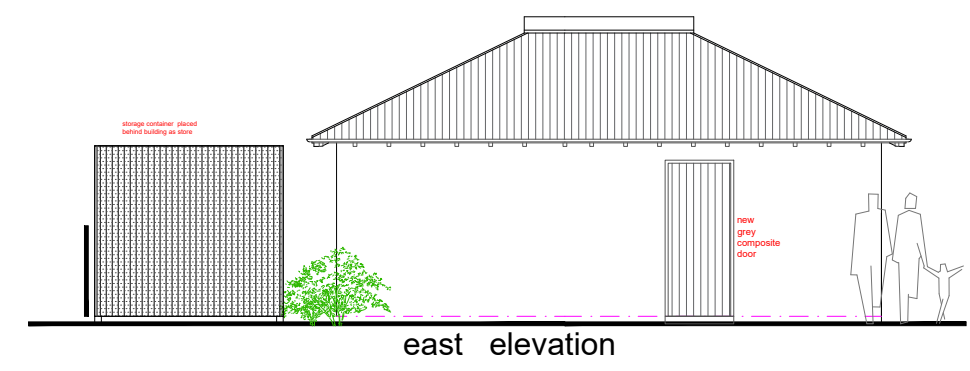
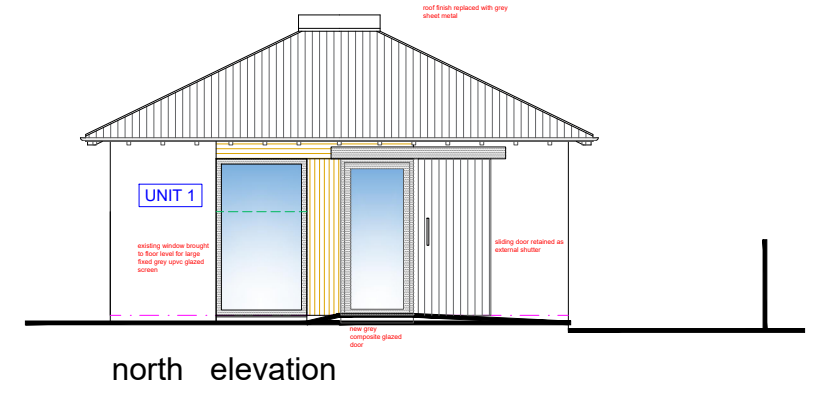
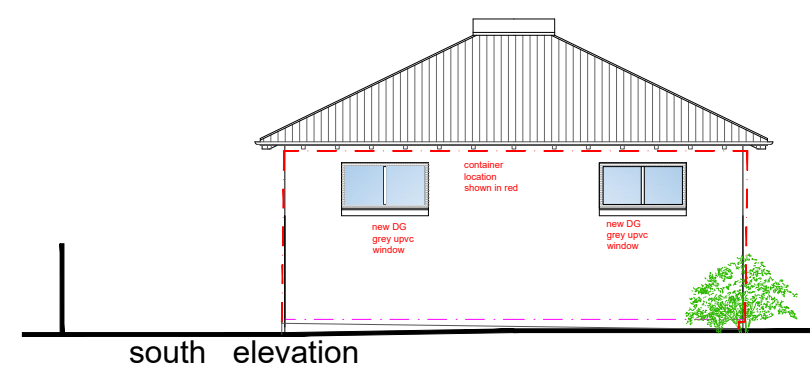


UNIT 2 CONTAINER :
site for 2.4x6.0x2.2m container proposed boundaries and tolerances to be carefully measured on site and agreed with adjacent users

undefined rear boundary with pedestrian access maintained

ALTERATIONS :
UNIT 1 : INCUBATOR BUSINESS UNIT
new glazed screen and entrance formed for light and views to sea. Suitable for cafe / snack bar / shop / office
To be insulated and serviced to suit new use
UNIT 2 : COMMUNITY SPACE + STORAGE
New WC and sink .. Insulation to suit

PROPOSED MATERIALS :
ROOF : replaced with grey sheet metal
WALLS : painted white, as existing
WINDOWS : replaced with efficient gark grey upvc



<p>chartered architect 1 waterloo : isle of skye http://www.grigor-taylorassociates.co.uk tansygd@btinternet.com : 07720059219</p>	<p>broadford old toilets : conversion for broadford + strath community company scale 1-100@a3 dwg no. 1069-101c</p>
	<p>grigor-taylor associates chartered architect</p>